

Injectronics

Remanufactured Automotive Electronics Components

PRODUCT SERVICE INFORMATION

Document number: P0001

For further technical information regarding testing, repairs or to search for New or Remanufactured Automotive electronic products, please visit www.injectronics.com.au, call our office on (+613) 8792 6999, or email sales@injectronics.com.au

Vehicle: Ford BF

Subject: PCM installation instructions

Company name: _____ Contact name / No: _____

Important Notes:

1. Ford BF PCM's (Power train control modules) must be correctly customized to the vehicle to ensure correct operation. This programming procedure must be carried out by Injectronics or a Ford dealership with a genuine scan tool.
2. If original PCM failed for ignition related faults (ie: cylinder miss) Injectronics recommend replacement of all ignition coils prior to installation of the change over PCM.

If installation is being performed at a Ford dealership, the following actions must be carried out:

- Programmable module installation operation performed (copied VIN, tyre size, axle ratio, ABS type, from original PCM to replacement PCM).
- Parameter reset performed to match security settings to allow the car to start and run.
- Interior command centre reset/calibration to remove radio security code error messages.

Customers who have an appropriate security matching scan tool only (example: G Scan, Hanatech)

The replacement PCM should have already had the programmable vehicle options programmed by Injectronics. These settings are as follows.

- | | |
|---|---|
| • Axle gear ratio:
<input type="checkbox"/> 3.23
<input type="checkbox"/> 3.45
<input type="checkbox"/> 3.46
<input type="checkbox"/> 3.27 | • Original fitment tyre size
<input type="checkbox"/> 215/65R16C 106/104T (770)
<input type="checkbox"/> 225/60R16 98V (783)
<input type="checkbox"/> 215/60R16 95V (798)
<input type="checkbox"/> 225/50R17 (805)
<input type="checkbox"/> 245/40ZR18 93 (809)
<input type="checkbox"/> 225/50ZR17 94W (810)
<input type="checkbox"/> 215/55R16 93V (819)
<input type="checkbox"/> 235/45ZR17 93W (825)
<input type="checkbox"/> R155/70R17 110M (830)
<input type="checkbox"/> 225/55R16 (842)
<input type="checkbox"/> T155/70R17 110M (830) |
| • Speed Control
Yes / No | |
| • Family number
ASU - _____ | |

Part Number: 7R29 / 5R29 _____

When the customer receives replacement PCM, the following must be performed:

- A security parameter reset (security matching procedure to allow the car to start & run)
- Interior command centre reset /calibration remove radio code security error messages. Note this can only be typically performed using a genuine ford scan tool at a dealership.
- The VIN data in the PCM can only be transferred from the original PCM into the replacement PCM if the technicians at Injectronics have access to the customers original PCM. Otherwise the VIN must be corrected using a genuine Ford Scan tool. Note: that the vehicle will start and run even if the VIN is incorrect.

Return of Injectronics exchange units:

If the replacement PCM does not fix the problem on the vehicle, the original PCM may be re-installed, a parameter reset operation performed again, and if the interior command centre has not been aligned to the PCM, then it will continue working as it did originally. The Injectronics remanufactured unit can then be returned to Injectronics for a retest fee.

P0001.doc

This publication is distributed with the understanding that the authors, editors and publishers are not responsible for the results of any actions or works of whatsoever kind undertaken on the basis of information contained in this publication, nor for any errors or omissions contained herein. The publishers, authors and editors expressly disclaim all and any liability to any person whomsoever whether a purchaser of this publication or not in respect of anything and of the consequences of anything done or omitted to be done by any such persons in reliance, whether whole or partial upon the whole or any part of the contents of this publication. Injectronics Australia Pty Ltd. © Copyright 2001.

Injectronics

Remanufactured Automotive Electronics Components

Ford BF PCM Installation Instructions

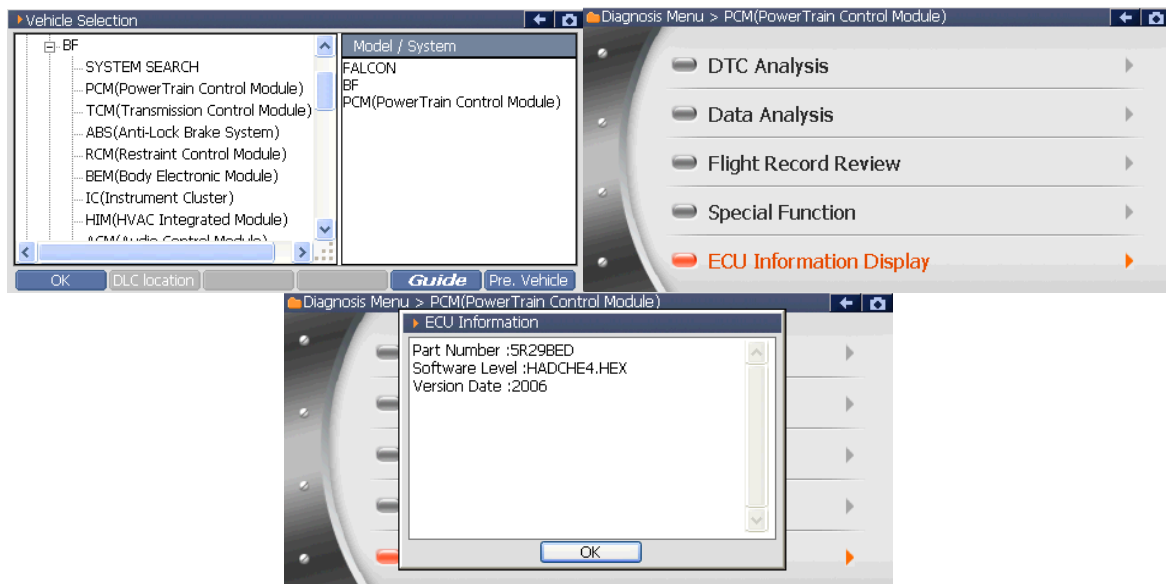
Ford BF PCM's (power train control modules) must be correctly programmed to suit the vehicles specific variants to ensure correct operation. This programming procedure must be carried out:

- Using a genuine Ford IDS scan tool (Ford dealership) - see details below.
- Alternatively by Injectronics when original PCM is sent in for software & variant coding to be copied, & then programmed into the exchange PCM.

Important Note:

If you require a pre-programmed PCM, without having to send the original PCM to Injectronics, you will need to complete the first page and email / fax it to Injectronics on 03 8795 7205 or sales@injectronics.com.au

VIN#, tyre size, axle ratio, cruise/speed control settings from original PCM can then be programmed to the replacement PCM prior to delivery. It is extremely important that the PCM hardware number from the PCM external sticker (eg: ASU153), and the PCM software version from the PCM memory are listed on the sheet. Below are steps to extracting the PCM software version using a G-Scan tool.



If PCM programming has been carried out by Injectronics prior to installation:

If Injectronics has pre-programmed the exchange PCM, upon installation the following actions must be carried out with a Ford IDS scan tool or a capable generic scan tool such as a G-Scan:

1. A parameter reset performed to match security settings, which allows the car to start and run. This is done using the PATS out-code/in-code system. Each Injectronics exchange PCM is supplied with an in-code which enables the installer to complete the parameter reset.
2. An interior command centre reset/calibration to remove radio security code error messages.

If PCM programming is carried out using a Ford IDS Scan tool:

If Injectronics has not pre-programmed the PCM, upon installation, the following actions must be carried out:

1. A programming module installation using Ford IDS will copy and transfer software and variant coding (VIN#, tyre size, axle ratio, cruise/speed control settings from original PCM programmed to the replacement PCM)
2. A parameter reset performed to match security settings to allow the car to start and run. This is done using the PATS out-code/in-code system. Each Injectronics exchange PCM is supplied with an in-code which enables the installer to complete the parameter reset.
3. An interior command centre reset/calibration to remove radio security code error messages.

P0001.doc