

Injectronics

Remanufactured Automotive Electronics Components

PRODUCT SERVICE INFORMATION

Document number: P0019

For further technical information regarding testing, repairs or to search for New or Remanufactured Automotive electronic products, please visit www.injectronics.com.au, call our office on (+613) 8792 6999, or email sales@injectronics.com.au

Vehicle: Holden Barina XC

Subject: ECM programming

Required Equipment: Tech 2, TIS-2000

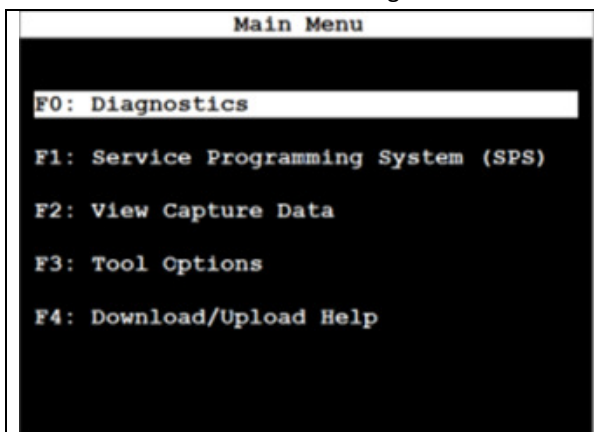
Stage 1: Collect Information

VIN: W O L O _____

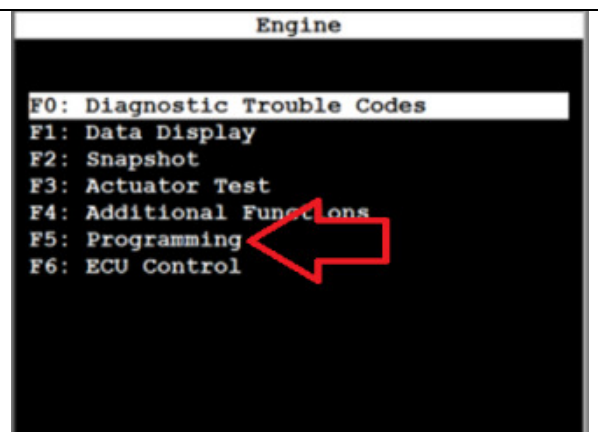
Security Code: _____

Cruise Control: Y N Transmission: MT AT MTA CVT Air Con Y N ABS Y N
Traction Control: Y N Vehicle Dynamics Y N Geometry: Close Wide
Transmission CAN: Y N TC/ESP CAN: Y N Oil Life: Y N

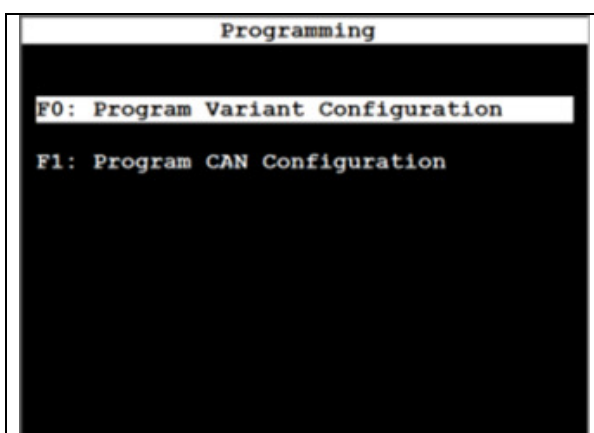
Connect Tech 2 to vehicle with original ECM installed



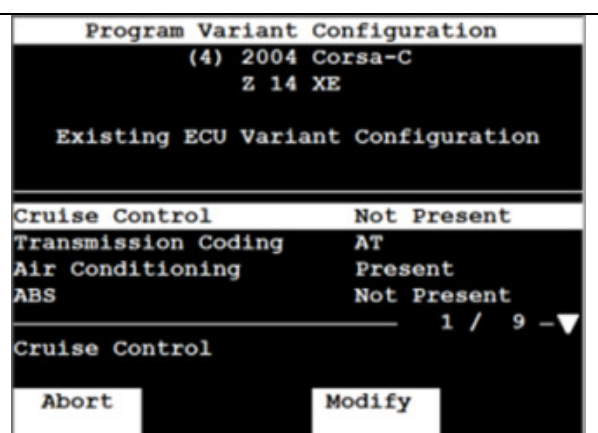
Navigate to the Z 14/16 XE Engine menu.



Select 'F5 Programming'



Collect the information from both menus.



Collect information and enter in table above

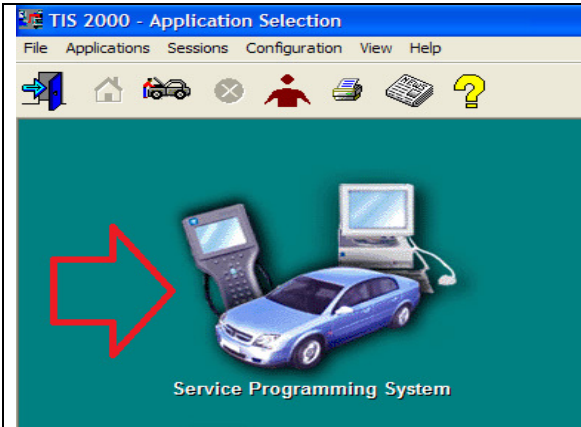
P0019.doc

This publication is distributed with the understanding that the authors, editors and publishers are not responsible for the results of any actions or works of whatsoever kind undertaken on the basis of information contained in this publication, nor for any errors or omissions contained herein. The publishers, authors and editors expressly disclaim all and any liability to any person whomsoever whether a purchaser of this publication or not in respect of anything and of the consequences of anything done or omitted to be done by any such persons in reliance, whether whole or partial upon the whole or any part of the contents of this publication. Injectronics Australia Pty Ltd. © Copyright 2001.

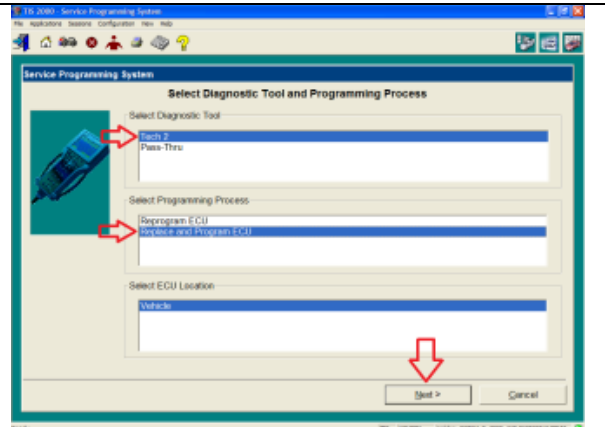
Injectronics

Remanufactured Automotive Electronics Components

Stage 2: SPS Programming.



Click on the Service Programming Icon within TIS2000



Select 'Replace and Program ECU' Click next.

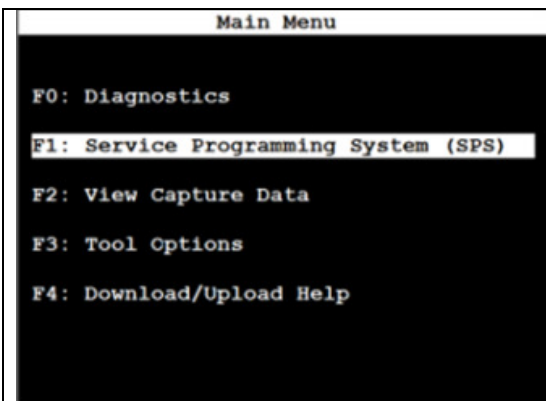
Stage 2: SPS Programming (Cont).

Preparing for Communication

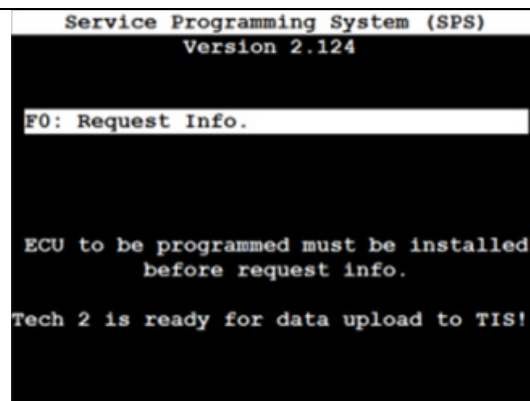
- Turn ignition off
- Remove existing controller from the vehicle
- Install new controller to be programmed

Next >

Follow the on-screen instructions.



Select F1, Service Programming menu

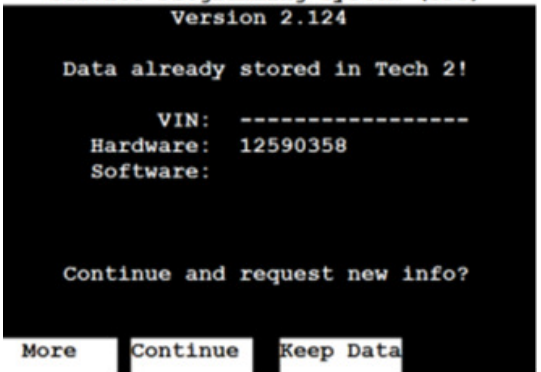
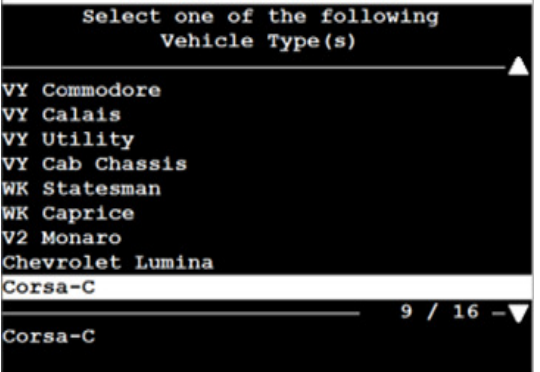


Information will be read from the ECM

P0019.doc

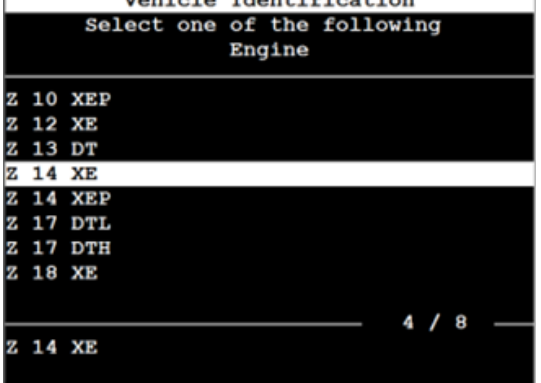

Injectronics

Remanufactured Automotive Electronics Components

 <p>Service Programming System (SPS) Version 2.124</p> <p>Data already stored in Tech 2!</p> <p>VIN: ----- Hardware: 12590358 Software:</p> <p>Continue and request new info?</p> <p>More Continue Keep Data</p>	 <p>Vehicle Identification Select one of the following Vehicle Type(s)</p> <p>VY Commodore VY Calais VY Utility VY Cab Chassis WK Statesman WK Caprice V2 Monaro Chevrolet Lumina Corsa-C 9 / 16 -</p> <p>Corsa-C</p>
---	---

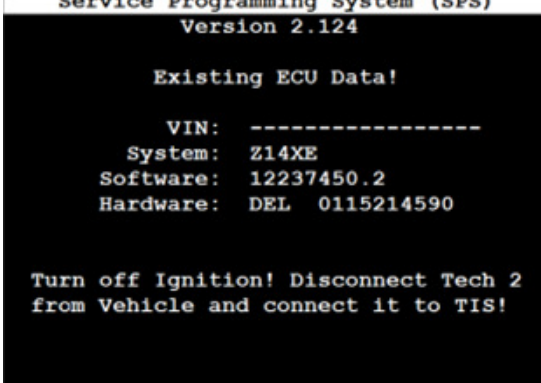
This warning may appear, select 'Continue'

Select correct year and vehicle type. Corsa-C

 <p>Vehicle Identification Select one of the following Engine</p> <p>Z 10 XEP Z 12 XE Z 13 DT Z 14 XE Z 14 XEP Z 17 DTL Z 17 DTH Z 18 XE 4 / 8</p> <p>Z 14 XE</p>	 <p>Service Programming System (SPS) Version 2.124</p> <p>Turn Off Ignition</p> <p>Okay</p>
---	--

Barina Z 14 XE Engine

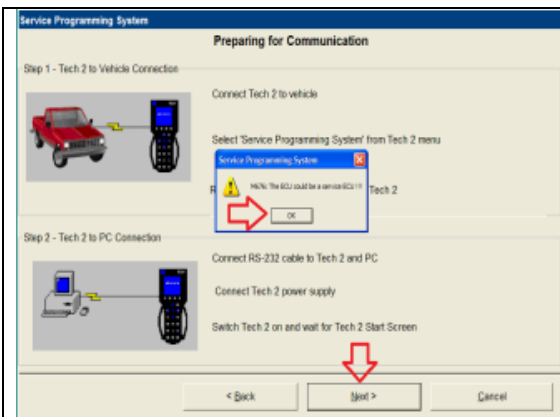
Stage 2: SPS Programming (Cont)

 <p>Service Programming System (SPS) Version 2.124</p> <p>Existing ECU Data!</p> <p>VIN: ----- System: Z14XE Software: 12237450.2 Hardware: DEL 0115214590</p> <p>Turn off Ignition! Disconnect Tech 2 from Vehicle and connect it to TIS!</p>	<p>ECU data is now stored in Tech 2 memory. Connect the scan tool to the PC with the data cable. Turn Tech 2 Off and then On again. Do NOT press any keys on Tech 2.</p> <p>TIS2000 will read data from scantool.</p>
---	---

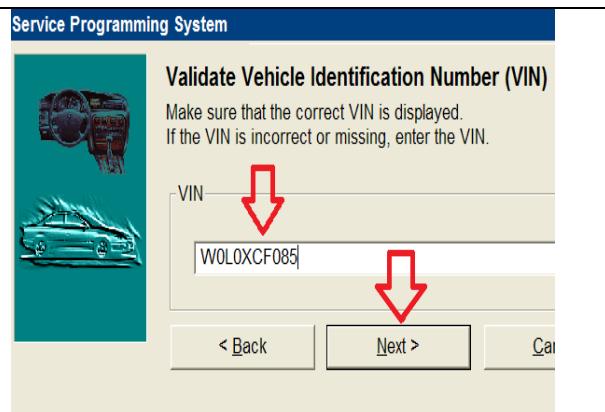
P0019.doc

Injectronics

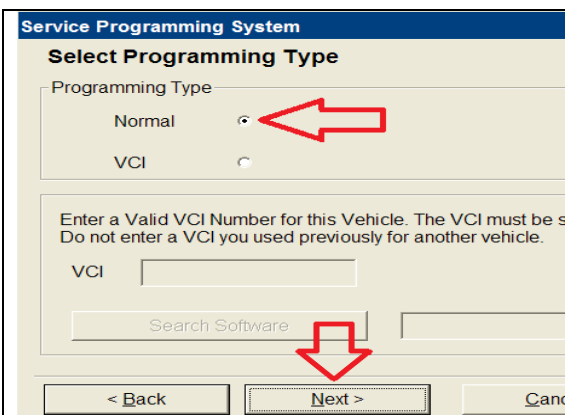
Remanufactured Automotive Electronics Components



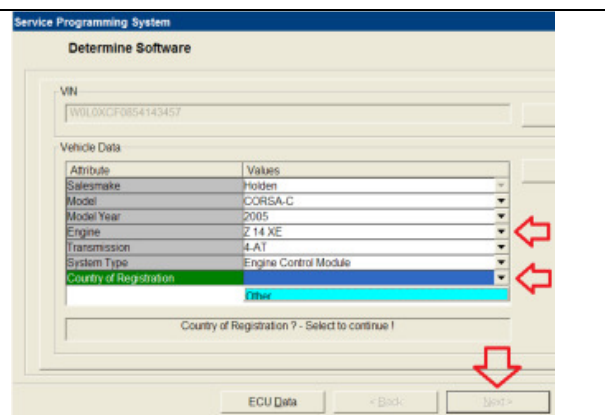
Click ok if Service ECU warning appears.



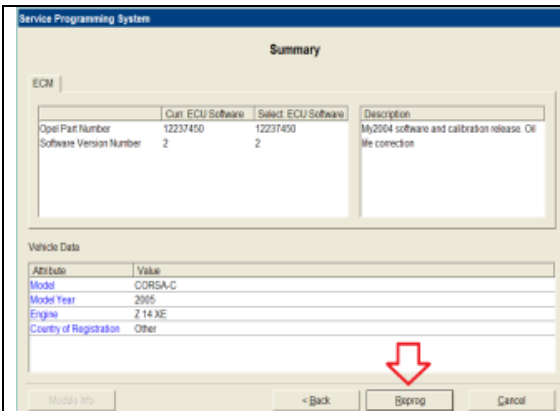
Enter the VIN, use Zeroes, not oh's



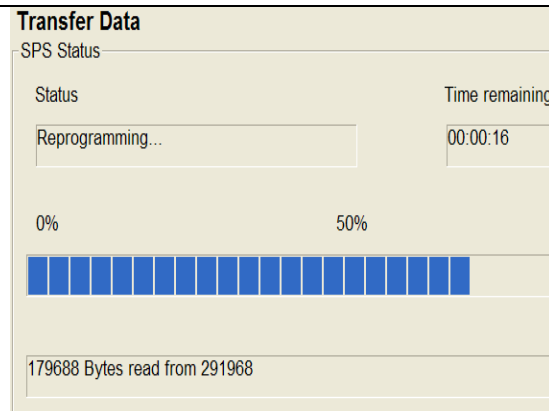
Select 'Normal' Programming Type



Select the Correct engine type, etc. Click next



A summary of the software versions are displayed. Click next



SPS Data is loaded into scan tool

P0019.doc

This publication is distributed with the understanding that the authors, editors and publishers are not responsible for the results of any actions or works of whatsoever kind undertaken on the basis of information contained in this publication, nor for any errors or omissions contained herein. The publishers, authors and editors expressly disclaim all and any liability to any person whomsoever whether a purchaser of this publication or not in respect of anything and of the consequences of anything done or omitted to be done by any such persons in reliance, whether whole or partial upon the whole or any part of the contents of this publication. Injectronics Australia Pty Ltd. © Copyright 2001.

Injectronics

Remanufactured Automotive Electronics Components



Program Controller

Step 3 - Tech 2 to Vehicle Connection

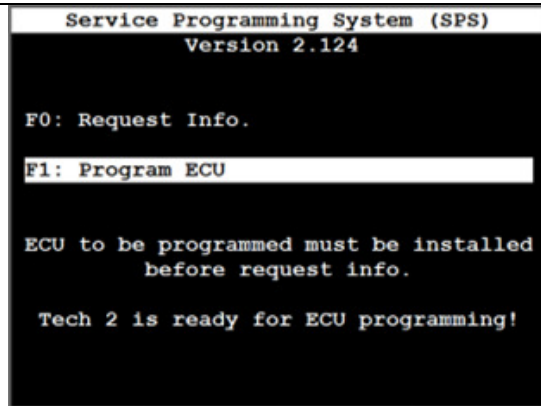
- Insure proper voltage to the vehicle.
- Connect Tech 2 to vehicle.
- Select 'Service Reprogramming' from Tech 2 main menu.
- Follow Tech 2 Service Reprogramming instructions.



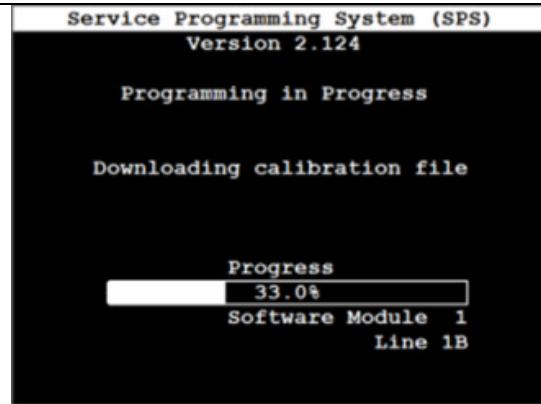
Close

Follow the on-screen instructions.

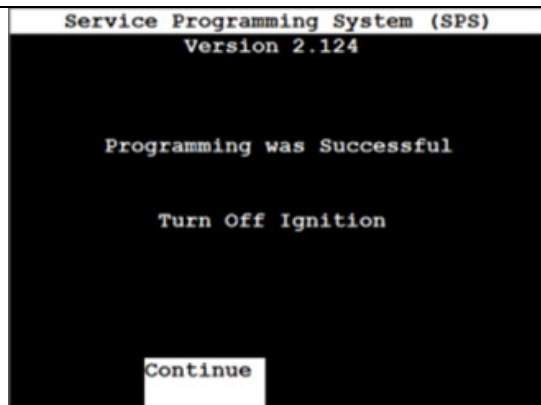
The Scan tool now must be connected to the Vehicle so ECM programming can be started.



Select 'F1 Program ECU' on Tech 2.



Follow the steps on scan tool turning key on and off, programming will start.



Programming takes a few minutes.

Now the ECU has the correct software revision loaded, and the VIN number is programmed.

Exit from the Tech 2 SPS system.

Enter the Tech 2 Diagnostics system

Select the correct Year

Select Corsa C, Select Engine, Select 14 XE

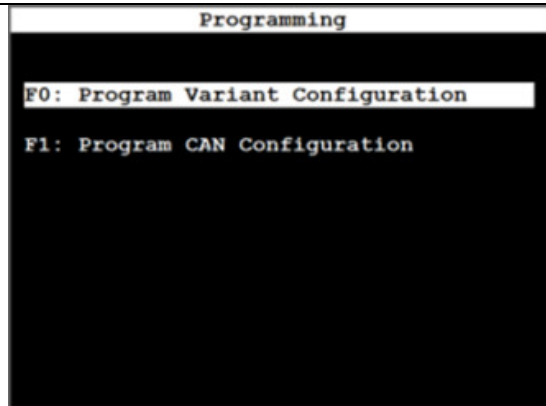
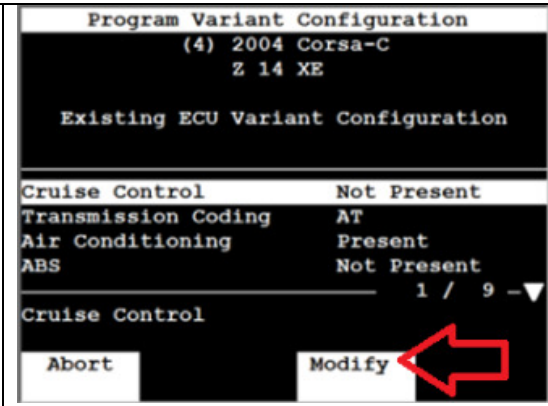
Select Programming

P0019.doc

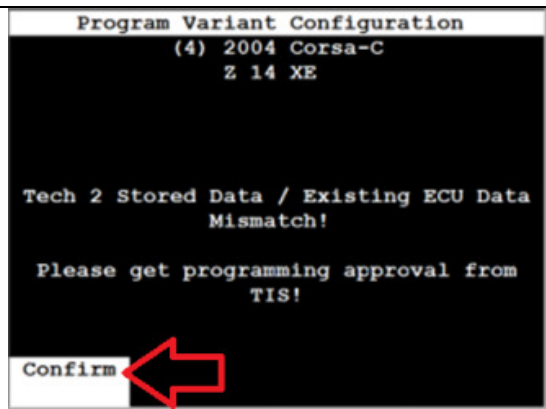
Injectronics



Remanufactured Automotive Electronics Components

Stage 3: Variant Programming

 <p>Go to the Variant Programming menu as shown in Stage 1</p>	 <p>Select 'Modify' to change Variant or CAN Configurations</p>
--	---

Stage 3: Variant Programming (Cont)

 <p>You may get this when changing variant coding</p>	<p>The Tech 2 must be connected to the PC to get programming approval</p>
--	---

 <p>Select the Security Access Icon</p>	 <p>Choose Tech 2 and click Next</p>
---	--

P0019.doc

Injectronics

Remanufactured Automotive Electronics Components

Security Access



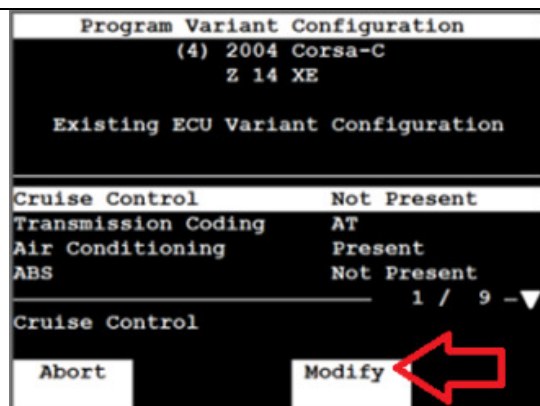
Security Access Enabled

Security Access Type 2 enabled
Security Access Type 3 enabled

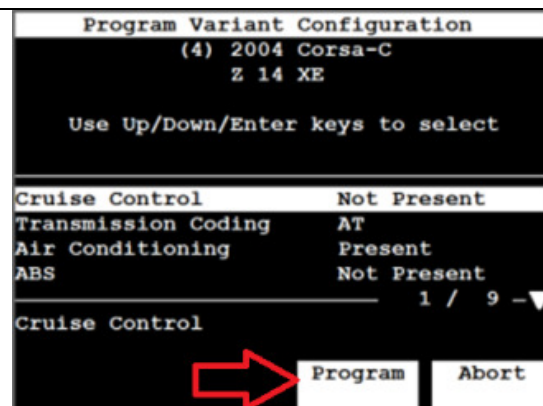
Close

After a Short delay access will be enabled.

Connect the scan tool back to the vehicle and return to the Variant coding menu

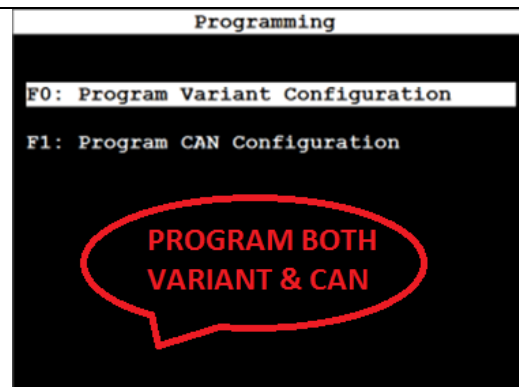
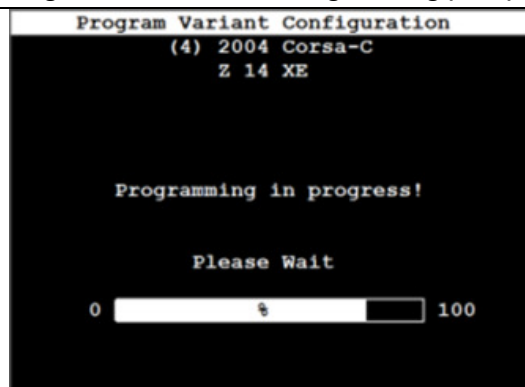


Select 'Modify', use the up and down arrows to select the item



Pressing Enter on the scan tool modifies the values. Select 'Program' to save changes

Stage 3: Variant Programming (Cont)



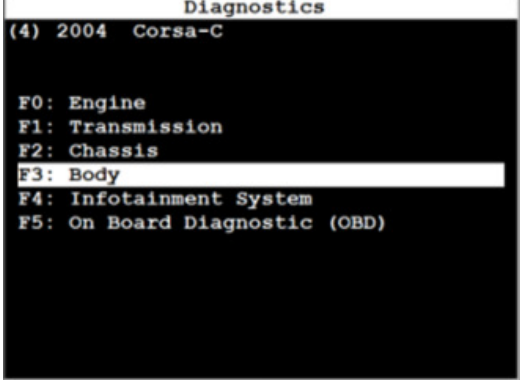
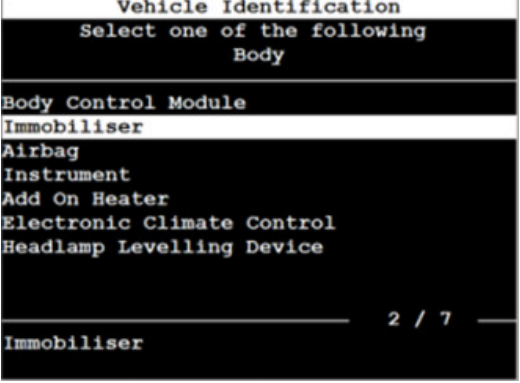
Remember to check both Variant **and** CAN configurations.

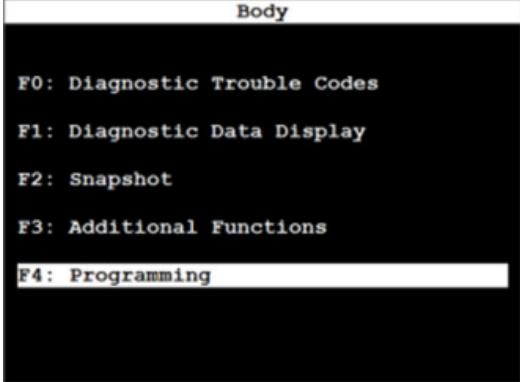
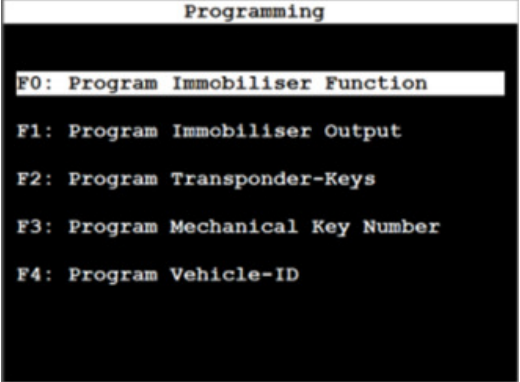
P0019.doc


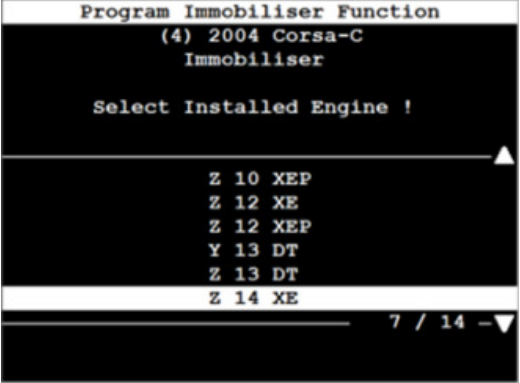
Injectronics

Remanufactured Automotive Electronics Components

Stage 4: Immobiliser Matching.

 <p>Diagnostics (4) 2004 Corsa-C F0: Engine F1: Transmission F2: Chassis F3: Body F4: Infotainment System F5: On Board Diagnostic (OBD)</p>	 <p>Vehicle Identification Select one of the following Body Body Control Module Immobiliser Airbag Instrument Add On Heater Electronic Climate Control Headlamp Levelling Device 2 / 7 Immobiliser</p>
Navigate to the Corsa-C menu	Select 'Immobiliser'

 <p>Body F0: Diagnostic Trouble Codes F1: Diagnostic Data Display F2: Snapshot F3: Additional Functions F4: Programming</p>	 <p>Programming F0: Program Immobiliser Function F1: Program Immobiliser Output F2: Program Transponder-Keys F3: Program Mechanical Key Number F4: Program Vehicle-ID</p>
'F4 Programming'	'F0 Program Immobiliser Function'

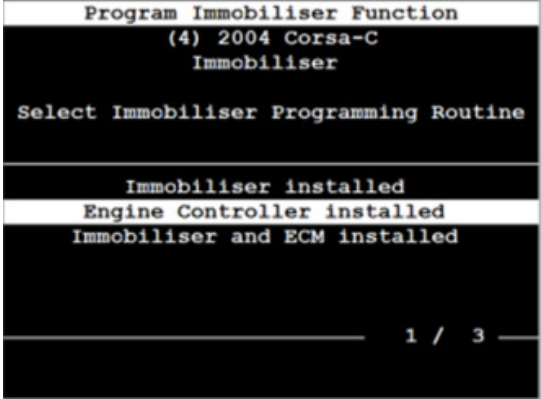
 <p>Program Immobiliser Function (4) 2004 Corsa-C Immobiliser Enter Security Code ! 0950 Not Okay Okay</p>	 <p>Program Immobiliser Function (4) 2004 Corsa-C Immobiliser Select Installed Engine ! Z 10 XEP Z 12 XE Z 12 XEP Y 13 DT Z 13 DT Z 14 XE 7 / 14 -</p>
Enter the correct Security code and confirm it	Select the correct engine for the vehicle

P0019.doc

Injectronics

Remanufactured Automotive Electronics Components

Stage 4: Immobiliser Matching (Cont)

 <p>Select 'Engine Controller Installed'</p>	Follow the scan tool prompts to cycle ignition on and off, then Matching will be completed.
---	---

Stage 5 ECM Learns basic settings

- a. Erase any Fault Codes in the ECM
- b. Erase any fault codes in the TCM
- c. Start the Engine and allow it to Idle for 1 minute
- d. Turn on Air Conditioning if fitted
- e. Cycle through all gear selections if automatic transmission is fitted.
- f. Take the vehicle for a complete drive cycle.

P0019.doc